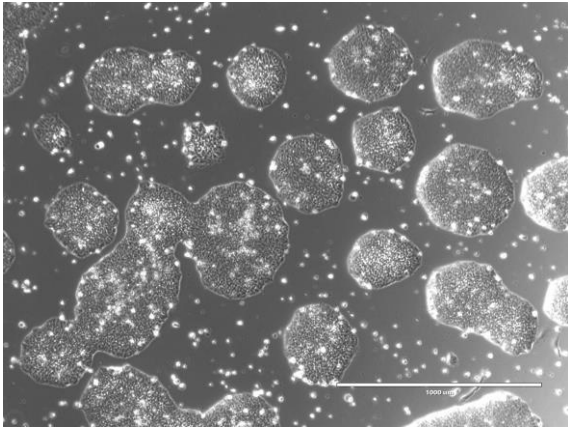
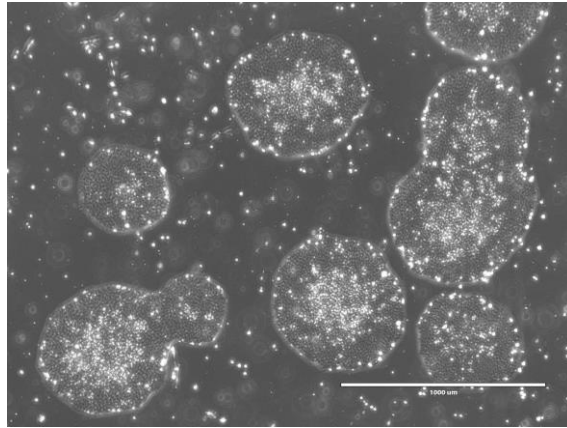


【 CiRA-j-1468 】 Morphology of iPSC colonies

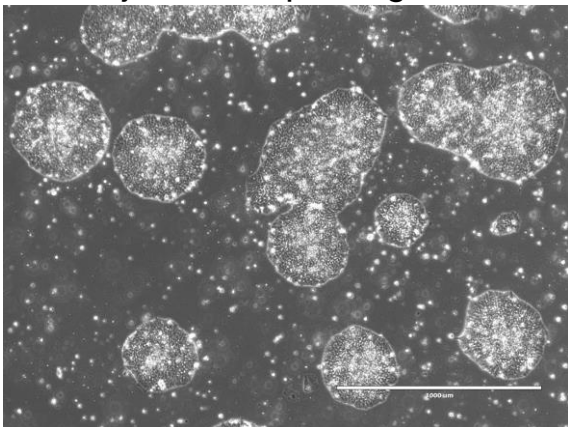
CiRA-j-1468-A: passage-3



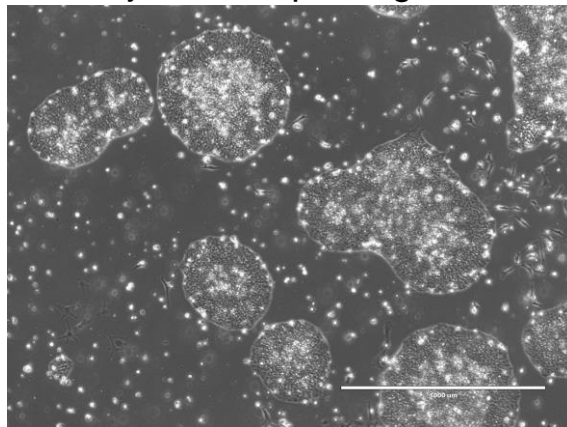
CiRA-j-1468-B: passage-3



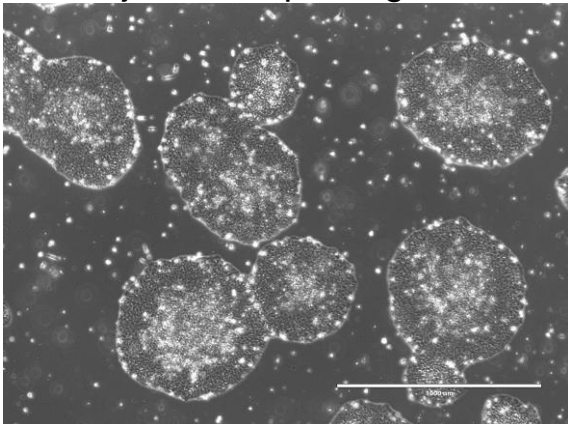
CiRA-j-1468-C: passage-3



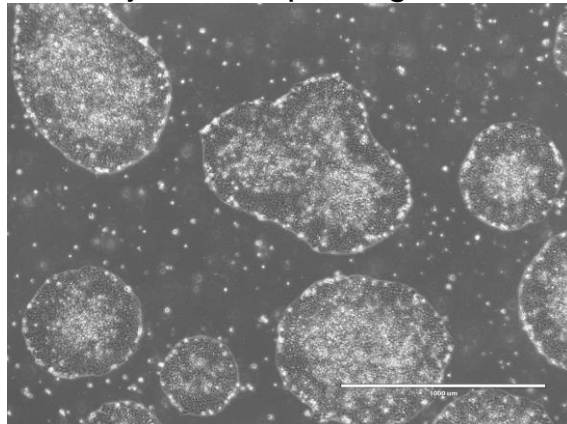
CiRA-j-1468-D: passage-3



CiRA-j-1468-E: passage-3



CiRA-j-1468-F: passage-3



(All images were captured at 4x magnification)